

# Frozen Yoghurt - Unflavoured 4 litre

Frozen Yoghurt - Unflavoured 4 Litre

## PRODUCT DESCRIPTION

Unflavoured Frozen Yoghurt

<b>Brand</b>	Suncream Dairies Ltd.
<b>Manufacturer Product Code</b>	AFYU4
<b>Product Type</b>	Food
<b>Product Category</b>	Desserts
<b>Storage Type</b>	Frozen
<b>Erudus ID</b>	6a2100f255e74b14bbfb303aa44cda23
<b>Specification Type</b>	Legacy
<b>Inner Component GTIN</b>	5010603000463
<b>Outer Case GTIN</b>	15010603000460



## INGREDIENTS

### Ingredient Declaration

Water, Sugar, Dextrose, Yoghurt Powder (**MILK**) (5%), Skimmed **MILK** Powder, Glucose Powder, Inulin (Chicory Root Powder), Butter **MILK** Powder ( **MILK**), Emulsifier (Mono & Di-glycerides Of Fatty Acids), Stabilisers (Locust Bean Gum, Guar Gum).

## ALLERGENS

Product Contains:

<b>Celery/Celeriac</b>	No	<b>Mustard</b>	No
<b>Cereals Containing Gluten</b>	No	<b>Nuts (Tree)</b>	No
<b>Barley</b>	No	<b>Almond nuts</b>	No
<b>Oats</b>	No	<b>Brazil nuts</b>	No
<b>Rye</b>	No	<b>Cashew nuts</b>	No
<b>Wheat (including Spelt and Khorasan)</b>	No	<b>Hazelnuts</b>	No
<b>Gluten content &lt;20ppm</b>	Yes	<b>Macadamia (Queensland) nuts</b>	No
<b>Crustacea</b>	No	<b>Pecan nuts</b>	No
<b>Eggs</b>	No	<b>Pistachio nuts</b>	No
<b>Fish</b>	No	<b>Walnuts</b>	No
<b>Lupin</b>	No	<b>Peanuts</b>	No
<b>Milk</b>	Yes	<b>Sesame Seeds</b>	No
<b>Molluscs</b>	No	<b>Soybeans</b>	No
		<b>Sulphur Dioxide and Sulphites</b>	No

## SUPPLEMENTARY INGREDIENT INFORMATION

<b>Palm Oil</b>	No
<b>Hydrogenated Vegetable Oil/Fat</b>	No
<b>GM Protein/DNA</b>	No

## ADDITIVES

Product Contains:

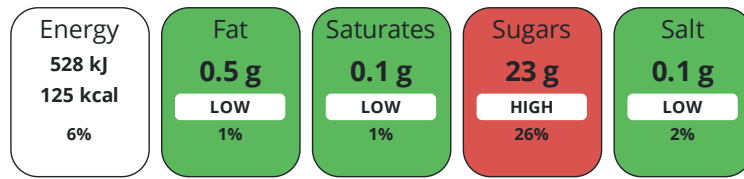
<b>Artificial Antioxidants</b>	No	<b>Artificial Flavourings</b>	No
<b>Artificial Colours</b>	No	<b>Artificial Preservatives</b>	No
<b>Artificial Flavour Enhancers</b>	No	<b>Artificial Sweeteners</b>	No

DIET  
SUITABILITY

<b>Suitable for Coeliacs</b>	Yes	<b>Halal Diet</b>	No
<b>Kosher Diet</b>	No	<b>Vegetarian Diet</b>	Suitable for
<b>Vegan Diet</b>	No		

NUTRITIONAL  
INFORMATION

Each 100g/ml portion contains:



of your reference intake.

Typical values per 100g/ml : Energy 125kcal / 528kj

Nutrient	per 100g/ml	RI per 100g/ml	per 100g/ml serving	RI per 100g/ml serving
<b>Energy (kJ)</b>	528 kJ	6%	528 kJ	6%
<b>Energy (kcal)</b>	125 kcal	6%	125 kcal	6%
<b>Fat</b>	< 0.5 g	1%	0.5 g	1%
<b>of which Saturates</b>	< 0.1 g	1%	0.1 g	1%
<b>Carbohydrate</b>	26 g	10%	26 g	10%
<b>of which Sugars</b>	23 g	26%	23 g	26%
<b>Fibre</b>	2.1 g		2.1 g	
<b>Protein</b>	3.1 g	6%	3.1 g	6%
<b>Salt</b>	0.1 g	2%	0.1 g	2%
<b>Serving Size</b>	100 g			

SUPPLEMENTARY  
NUTRITIONAL  
INFORMATION

HFSS (HIGH IN  
FAT, SALT AND  
SUGAR)  
HANDLING &  
STORAGE  
INFORMATION

<b>HFSS Status</b>	Yes
<b>Directions For Use</b>	Scoop from frozen
<b>Storage Instructions</b>	Always store frozen. Store at -18°C or below. Do not refreeze once defrosted.
<b>Shelf Life from Time of Production</b>	730 Days

ACCREDITATIONS/  
CERTIFICATIONS/  
ASSURANCE  
SCHEMES



ORIGIN

<b>Product Country of Origin/Place of Provenance</b>	United Kingdom
<b>Additional Origin Details</b>	UK

PRODUCT  
CHARACTERISTICS

Standards Testing			
<b>Do you undertake trend analysis of microbiological results?</b>	Yes	<b>Is shelf life testing undertaken?</b>	Yes

Microbiological Standards

Organism	Description	Frequency	Target	Maximum	Sample (g or ml)
Total Viable Count (TVC) (cfu/g or ml)	g	Every Batch	<100000	300000	1
Enterobacteriaceae (cfu/g or ml)	g	Every Batch	<10	100	1
E. Coli (cfu/g or ml)	g	Annually	=0	0	1
Staphylococcus Aureus (cfu/g or ml)	g	Quarterly	<0	100	1
Salmonella (cfu/g or ml)	g	Quarterly	<0	1	25
Listeria SPP (cfu/g or ml)	g	Annually	<0	0	25
Listeria Monocytogenes (cfu/g or ml)	g	Annually	<0	0	25
Bacillus Cereus (cfu/g or ml)	g	Annually	<0	50	1

CONFIGURATION

Case Configuration

Inner Pack Configuration

**Total Quantity of Inner Components in** 6 Units

**Outer Case**

**Is the Outer Case Splittable?** Yes

PRODUCT WEIGHTS

Inner Component

**Variable Weight Consumer Item** Yes

**Inner Component Weight** 1450 g

**Weight/Volume**

Target Product Weight (incl.packaging) 1.45 kg Target Product

Net Weight 1.32 kg

Outer Case

**Outer Case Gross Weight** 9.8 kg

**Outer Case Net Weight** 8.7 kg

PRODUCT DIMENSIONS

Inner Component

**Inner Component Depth** 228 mm

**Inner Component Width** 167 mm

**Inner Component Height** 153 mm

Outer Case

**Outer Case Depth** 499 mm

**Outer Case Width** 225 mm

**Outer Case Height** 297 mm

PALLET INFORMATION

**Quantity of Cases Per Pallet Layer** 10 Cases

**Pallet Height** 1.7 MTR

**Quantity of Layers Per Pallet** 5 Layers

**Pallet Gross Weight** 490 kg

**Quantity of Cases Per Pallet** 50 Cases

PACKAGING

Inner Component Packaging

Type	Materials	Weight	Recycled Plastic %	Recyclable	Returnable	Composite
Tub	Plastic	130 g	0.00 %			

Outer Case Packaging

Type	Materials	Weight	Recycled Plastic %	Recyclable	Returnable	Composite
Case	Plastic	4 g	0.00 %			
Case	Paper/Cardboard	322 g	- %			

Transport Packaging

Type	Materials	Weight	Recycled Plastic %	Recyclable	Returnable	Composite
Other	Plastic	168 g	0.00 %		Yes	
Other	Paper/Cardboard	3 g	- %		Yes	
Other	Wood	28000 g	- %		Yes	

OTHER INFORMATION

**Commodity Code** 2105001000

**Manufacturer Comments**

Payment 28th of the month following Prices- To Port

CONTACT INFORMATION

Address

Suncream Dairies Ltd.  
 Unit 7D Claymore  
 Tame Valley Industrial Estate  
 Tamworth  
 Staffordshire  
 B77 5DQ  
 United Kingdom

P: (Phone) 01827 282571

Complaints Contact

Joanna Kucz  
 Quality Manager  
 JoannaKucz@suncreamdairies.com

P: (Phone) 07717671677

Technical Contact

Joanna Kucz  
 Quality Manager  
 JoannaKucz@suncreamdairies.com

P: (Phone) 01827 282571 or 07717671677

Commercial Contact

Gillian Graham  
 Head of Sales  
 gilliangraham@suncreamdairies.com

P: (Phone) 07834728903

The information on the [Erudus System](#) has been supplied by the manufacturers of the products and, whilst the owners of the Erudus System take steps to ensure the information is regularly updated, they give no warranty and no guarantee that the information is accurate. Product information and ingredients may change, please always read product labels carefully in addition to using the information provided by Erudus.

We do not accept liability for any inaccuracies or incorrect information contained on this site.  
 Please visit <http://www.erudus.com/terms-and-conditions> for full terms and conditions.