

# Chickpea & Spinach Dahl 5 (2.4) kg - Frozen

Chickpea & Spinach Dahl 5x2400g

## PRODUCT DESCRIPTION

Cooked frozen Asian - inspired Chickpea & vegetable Dahl

<b>Brand</b>	Spoonful Soups by Projuice
<b>Manufacturer Product Code</b>	SOUP-DAHL
<b>Product Type</b>	Food
<b>Product Category</b>	Soup
<b>Storage Type</b>	Frozen
<b>Specification Type</b>	Generic

<b>Inner Pack GTIN</b>	5056702901928
<b>Inner Pack Product Code</b>	PRCHI504
<b>Outer Case GTIN</b>	15056702901925



## INGREDIENTS

### Ingredient Declaration

Water, Chickpeas (20%), Onions, Spinach (7%), Potato, Cauliflower, Tomato Paste, Garlic Puree, Whipping Cream (**MILK**), Vegetable Stock [Vegetable Stock (Water, Onion, Carrot Extract, Tomato, Celeriac (**CELERY**), Herbs, Garlic, Spice), Salt, Glucose Syrup, Maltodextrin, Yeast Extracts, Sugar, Flavours, Rapeseed Oil], Mild Curry Powder [Coriander, Turmeric, Cumin, Gram Flour, Salt, Fenugreek, Pepper, Chilli, Garlic, Fennel, **MUSTARD**, Star Anise], Ground Cumin, Rapeseed Oil, Red Chilli, Ground Coriander, Salt, Black Pepper.

## ALLERGENS

Product Contains:

<b>Celery/Celeriac</b>	Yes	<b>Mustard</b>	Yes
<b>Cereals Containing Gluten</b>	No	<b>Nuts (Tree)</b>	No
<b>Barley</b>	No	<b>Almond nuts</b>	No
<b>Oats</b>	No	<b>Brazil nuts</b>	No
<b>Rye</b>	No	<b>Cashew nuts</b>	No
<b>Wheat (including Spelt and Khorasan)</b>	No	<b>Hazelnuts</b>	No
<b>Crustacea</b>	No	<b>Macadamia (Queensland) nuts</b>	No
<b>Eggs</b>	No	<b>Pecan nuts</b>	No
<b>Fish</b>	No	<b>Pistachio nuts</b>	No
<b>Lupin</b>	No	<b>Walnuts</b>	No
<b>Milk</b>	Yes	<b>Peanuts</b>	No
<b>Molluscs</b>	No	<b>Sesame Seeds</b>	No
		<b>Soybeans</b>	No
		<b>Sulphur Dioxide and Sulphites</b>	No

## SUPPLEMENTARY INGREDIENT INFORMATION

<b>Palm Oil</b>	No
<b>Hydrogenated Vegetable Oil/Fat</b>	No
<b>GM Protein/DNA</b>	No

ADDITIVES

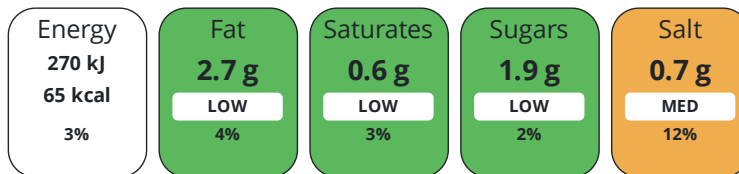
Product Contains:

<b>Artificial Antioxidants</b>	No	<b>Artificial Flavourings</b>	No
<b>Artificial Colours</b>	No	<b>Artificial Preservatives</b>	No
<b>Artificial Flavour Enhancers</b>	No	<b>Artificial Sweeteners</b>	No
<b>Vegan Diet</b>	No	<b>Vegetarian Diet</b>	Suitable for
<b>Halal Diet</b>	No	<b>Kosher Diet</b>	No

DIET SUITABILITY

NUTRITIONAL INFORMATION

Each 100g/ml portion contains:



of your reference intake.

Typical values per 100g/ml : Energy 65kcal / 270kj

Nutrient	per 100g	RI per 100g
<b>Energy (kJ)</b>	270 kJ	3%
<b>Energy (kcal)</b>	65 kcal	3%
<b>Fat</b>	2.7 g	4%
<b>of which Saturates</b>	0.6 g	3%
<b>Carbohydrate</b>	6.6 g	3%
<b>of which Sugars</b>	1.9 g	2%
<b>Fibre</b>	1.8 g	
<b>Protein</b>	2.4 g	5%
<b>Salt</b>	0.7 g	12%

**Source of Nutritional Information** Calculation from known/accepted datasets

SUPPLEMENTARY NUTRITIONAL INFORMATION

**Fibre Type** Fibre AOAC

HFSS (HIGH IN FAT, SALT AND SUGAR)

**HFSS Status** No

**HFSS Score** 2

HANDLING & STORAGE INFORMATION

**Directions For Use**

Thoroughly defrost in a refrigerator before use. Open and stir well. Serve hot. Hob: Remove contents from packaging. Place into a saucepan. Heat until piping hot. Stir occasionally; do not boil. Microwave: (800W) 2 ½ mins; (900W) 2 mins. (Based on portion size of 400g). Remove contents from packaging. Place into a non metallic container. Cover. Heat on full power. Timings may vary according to oven power and portion size. Heat until piping hot.

**Storage Instructions**

Keep frozen at minus 18C or colder. Once thawed, keep chilled (0C to +5C) and use within 14 days. Once opened, keep chilled (0C to +5C) use within 3 days and by date shown on label.

**Storage Instructions After Opening**

Keep chilled (0C to +5C)

**Shelf Life from Time of Production** 365 Days

**Shelf Life Once Defrosted** 14 Days

ACCREDITATIONS/ CERTIFICATIONS/ ASSURANCE SCHEMES

**SALSA (Safe & Local Supplier Approval)**

ORIGIN	<b>Product Country of Origin/Place of Provenance</b>		United Kingdom			
PRODUCT CHARACTERISTICS	Standards Testing					
	<b>Do you undertake trend analysis of microbiological results?</b>	Yes	<b>Is shelf life testing undertaken? Commercially Sterile</b>	Yes	No	
	Microbiological Standards					
	<b>Organism</b>	<b>Description</b>	<b>Frequency</b>	<b>Target</b>	<b>Maximum</b>	<b>Sample (g or ml)</b>
	Total Viable Count (TVC) (cfu/g or ml)		Annually	<10000	10000000	1
	Enterobacteriaceae (cfu/g or ml)		Annually	<100	10000	1
	E. Coli (cfu/g or ml)		Annually	<20	100	1
	Staphylococcus Aureus (cfu/g or ml)		Annually	<20	10000	1
	Salmonella (cfu/g or ml)		Annually	<0	10	25
	Bacillus Cereus (cfu/g or ml)		Annually	<1000	100000	1
Listeria Monocytogenes (cfu/g or ml)		Annually	<0	10	1	
Clostridium Perfringens (cfu/g or ml)		Annually	<10	10000	1	
Physical Standards						
<b>Test</b>	<b>Description</b>	<b>Frequency</b>	<b>Target</b>	<b>Range</b>	<b>Sample (g or ml)</b>	
Weight (g)		Every Batch	>2400	2400 to 2640	2400	
CONFIGURATION	Case Configuration		Inner Pack Configuration			
	<b>Total Quantity of Inner Components in Outer Case</b>	5 Units				
	<b>Total Quantity of Inner Packs in Outer Case</b>	5 Units				
	<b>Is the Outer Case Splittable?</b>	Yes				
PRODUCT WEIGHTS	Inner Component		Inner Pack			
	<b>Variable Weight Consumer Item</b>	No	<b>Inner Pack Gross Weight</b>	2415 g		
	<b>Inner Component Weight</b>	2400 g	<b>Inner Pack Net Weight</b>	2400 g		
	<b>Net Drained Weight</b>	0 g				
	<b>e mark</b>	No				
	Outer Case					
	<b>Outer Case Gross Weight</b>	12.34 kg				
	<b>Outer Case Net Weight</b>	12 kg				
PRODUCT DIMENSIONS	Inner Component		Inner Pack			
	<b>Inner Component Depth</b>	210 mm	<b>Inner Pack Depth</b>	210 mm		
	<b>Inner Component Width</b>	310 mm	<b>Inner Pack Width</b>	310 mm		
	<b>Inner Component Height</b>	50 mm	<b>Inner Pack Height</b>	50 mm		
	Outer Case					
	<b>Outer Case Depth</b>	240 mm	<b>OTHER INFORMATION</b>			
	<b>Outer Case Width</b>	320 mm				
	<b>Outer Case Height</b>	310 mm	<b>Identification/Health Marks</b>	UK DM016		