

Spiced Root Vegetable Soup 5 (2.4) kg - Frozen

Spiced Root Vegetable Soup 5x2400g

PRODUCT DESCRIPTION

Cooked frozen spiced mixed root vegetable soup

Brand	Spoonful Soups by Projuice
Manufacturer Product Code	SOUP-VEG
Product Type	Food
Product Category	Soup
Storage Type	Frozen
Specification Type	Generic
Inner Pack GTIN	5056702901959
Outer Case GTIN	15056702901956



INGREDIENTS

Ingredient Declaration

Water, Carrots (12%), Onions (10%), Parsnip (9%), Swede (6%), **CELERY** (5%), Whipping Cream (**MILK**), Honey (1%), Vegetable Stock [Vegetable Stock (Water, Onion, Carrot Extract, Tomato, Celeriac (**CELERY**), Herbs, Garlic, Spice), Salt, Glucose Syrup, Maltodextrin, Yeast Extracts, Sugar, Flavourings, Rapeseed Oil], Maize Starch, Salt, Cumin Seeds (0.4%), Chopped Coriander, Soup Stock [Vegetable Stock (Water, Onion, Carrot Extract, Tomato, Celeriac (**CELERY**), Herb), Glucose Syrup, Flavouring (contains **EGG**), Yeast Extracts, Salt, Rapeseed Oil, Maltodextrin, Sugar], Patrap Spices (0.2%) [Chopped Coriander, Ground Cardamom, Cumin Seeds, Paprika, Turmeric, Ground Cinnamon, Ground Bay Leaf, Ground Cloves, Chilli Powder, Cracked Black Pepper], Rapeseed Oil, Ground Cumin (0.05%), Cracked Black Pepper (0.03%)

ALLERGENS

Product Contains:

Celery/Celeriac	Yes	Mustard	No
Cereals Containing Gluten	No	Nuts (Tree)	No
Barley	No	Almond nuts	No
Oats	No	Brazil nuts	No
Rye	No	Cashew nuts	No
Wheat (including Spelt and Khorasan)	No	Hazelnuts	No
Crustacea	No	Macadamia (Queensland) nuts	No
Eggs	Yes	Pecan nuts	No
Fish	No	Pistachio nuts	No
Lupin	No	Walnuts	No
Milk	Yes	Peanuts	No
Molluscs	No	Sesame Seeds	No
		Soybeans	Yes
		Sulphur Dioxide and Sulphites	No

SUPPLEMENTARY INGREDIENT INFORMATION

Palm Oil	No
Hydrogenated Vegetable Oil/Fat	No
GM Protein/DNA	No

ADDITIVES

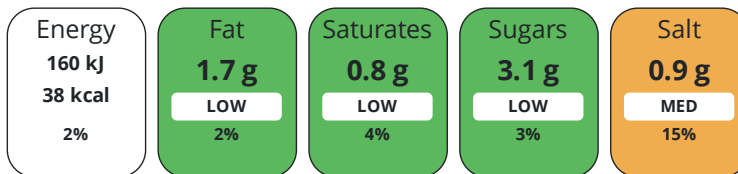
Product Contains:

Artificial Antioxidants	No	Artificial Flavourings	No
Artificial Colours	No	Artificial Preservatives	Yes
Artificial Flavour Enhancers	No	Artificial Sweeteners	No
Vegan Diet	No	Vegetarian Diet	Suitable for
Halal Diet	No	Kosher Diet	No

DIET SUITABILITY

NUTRITIONAL INFORMATION

Each 100g/ml portion contains:



of your reference intake.

Typical values per 100g/ml : Energy 38kcal / 160kj

Nutrient	per 100g	RI per 100g
Energy (kJ)	160 kJ	2%
Energy (kcal)	38 kcal	2%
Fat	1.7 g	2%
of which Saturates	0.8 g	4%
Carbohydrate	4.6 g	2%
of which Sugars	3.1 g	3%
Fibre	1.2 g	
Protein	0.6 g	1%
Salt	0.9 g	15%

Source of Nutritional Information Calculation from known/accepted datasets

SUPPLEMENTARY NUTRITIONAL INFORMATION

Fibre Type Fibre AOAC

HFSS (HIGH IN FAT, SALT AND SUGAR)

HFSS Status No

HFSS Score -2

HANDLING & STORAGE INFORMATION

Directions For Use

Thoroughly defrost in a refrigerator before use. Open and stir well. Serve hot. Hob: Remove contents from packaging. Place into a saucepan. Heat until piping hot. Stir occasionally; do not boil. Microwave: (800W) 2 ½ mins; (900W) 2 mins. (Based on portion size of 400g). Remove contents from packaging. Place into a non metallic container. Cover. Heat on full power. Timings may vary according to oven power and portion size. Heat until piping hot.

Storage Instructions

Keep frozen at minus 18C or colder. Once thawed, keep chilled (0C to +5C) and use within 14 days. Once opened, keep chilled (0C to +5C) use within 3 days and by date shown on label.

Storage Instructions After Opening

Keep chilled (0C to +5C)

Shelf Life from Time of Production 365 Days

Shelf Life Once Defrosted 14 Days

ACCREDITATIONS/ CERTIFICATIONS/ ASSURANCE SCHEMES

SALSA (Safe & Local Supplier Approval)

ORIGIN	Product Country of Origin/Place of Provenance		United Kingdom			
PRODUCT CHARACTERISTICS	Standards Testing					
	Do you undertake trend analysis of microbiological results?	Yes	Is shelf life testing undertaken? Commercially Sterile	Yes	No	
	Microbiological Standards					
	Organism	Description	Frequency	Target	Maximum	Sample (g or ml)
	Total Viable Count (TVC) (cfu/g or ml)		Annually	<10000	10000000	1
	Enterobacteriaceae (cfu/g or ml)		Annually	<100	10000	1
	E. Coli (cfu/g or ml)		Annually	<20	100	1
	Staphylococcus Aureus (cfu/g or ml)		Annually	<20	10000	1
	Salmonella (cfu/g or ml)		Annually	<0	10	25
	Bacillus Cereus (cfu/g or ml)		Annually	<1000	100000	1
Listeria Monocytogenes (cfu/g or ml)		Annually	<0	10	1	
Clostridium Perfringens (cfu/g or ml)		Annually	<10	10000	1	
Physical Standards						
Test	Description	Frequency	Target	Range	Sample (g or ml)	
Weight (g)		Every Batch	>2400	2400 to 2640	2400	
CONFIGURATION	Case Configuration		Inner Pack Configuration			
	Total Quantity of Inner Components in Outer Case	5 Units				
	Total Quantity of Inner Packs in Outer Case	5 Units				
	Is the Outer Case Splittable?	Yes				
PRODUCT WEIGHTS	Inner Component		Inner Pack			
	Variable Weight Consumer Item	No	Inner Pack Gross Weight	2415 g		
	Inner Component Weight	2400 g	Inner Pack Net Weight	2400 g		
	Net Drained Weight	0 g				
	e mark	No				
	Outer Case					
	Outer Case Gross Weight	12.34 kg				
	Outer Case Net Weight	12 kg				
PRODUCT DIMENSIONS	Inner Component		Inner Pack			
	Inner Component Depth	210 mm	Inner Pack Depth	210 mm		
	Inner Component Width	310 mm	Inner Pack Width	310mm		
	Inner Component Height	50 mm	Inner Pack Height	50 mm		
	Outer Case					
	Outer Case Depth	240 mm	MARKETING INFORMATION			
	Outer Case Width	320 mm	Marketing Description			
Outer Case Height	310 mm	Cooked frozen spiced mixed root vegetable soup with fresh cream and honey				