

Vegan Thai Green Lentil Soup 5 (2.4) kg - Frozen

Vegan Thai Green Lentil 5x2400g

PRODUCT DESCRIPTION

Cooked frozen Thai Green Lentil soup

Brand	Projuice
Manufacturer Product Code	SOUP-THAI
Product Type	Food
Product Category	Soup
Storage Type	Frozen
Specification Type	Generic
Inner Pack GTIN	5056702901911
Inner Pack Product Code	PRGRE823
Outer Case GTIN	15056702901918



INGREDIENTS

Ingredient Declaration

Water, Red Split Lentils (10%), Onion, Desiccated Coconut, Salt, Split Green Lentils (4%), Spinach, Spring Onion, Vegetable Stock [Vegetable Stock (Water, Onion, Carrot Extract, Tomato, Celeriac (**CELERY**), Herbs, Garlic, Spice), Salt, Glucose Syrup, Maltodextrin, Yeast Extracts, Sugar, Flavourings, Rapeseed Oil], Lemongrass, Red Chilli, Chopped Coriander, Garlic Puree, Concentrated Lime Juice, Ground Coriander, Paprika.

ALLERGENS

Product Contains:

Celery/Celeriac	Yes	Mustard	No
Cereals Containing Gluten	No	Nuts (Tree)	No
Barley	No	Almond nuts	No
Oats	No	Brazil nuts	No
Rye	No	Cashew nuts	No
Wheat (including Spelt and Khorasan)	No	Hazelnuts	No
Crustacea	No	Macadamia (Queensland) nuts	No
Eggs	No	Pecan nuts	No
Fish	No	Pistachio nuts	No
Lupin	No	Walnuts	No
Milk	No	Peanuts	No
Molluscs	No	Sesame Seeds	No
		Soybeans	No
		Sulphur Dioxide and Sulphites	No

SUPPLEMENTARY INGREDIENT INFORMATION

Palm Oil	No
Hydrogenated Vegetable Oil/Fat	No
GM Protein/DNA	No

MARKETING INFORMATION

Marketing Description

Cooked frozen Thai - style spiced lentil, coconut and vegetable soup with garlic, lemongrass and chilli

ADDITIVES

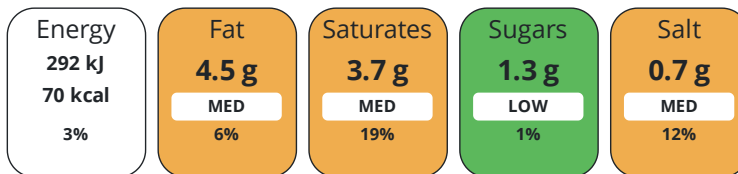
Product Contains:

Artificial Antioxidants	No	Artificial Flavourings	No
Artificial Colours	No	Artificial Preservatives	No
Artificial Flavour Enhancers	No	Artificial Sweeteners	No
Vegan Diet	Suitable for	Vegetarian Diet	Suitable for
Halal Diet	No	Kosher Diet	No

DIET
SUITABILITY

NUTRITIONAL
INFORMATION

Each 100g/ml portion contains:



of your reference intake.

Typical values per 100g/ml : Energy 70kcal / 292kJ

Nutrient	per 100g	RI per 100g
Energy (kJ)	292 kJ	3%
Energy (kcal)	70 kcal	4%
Fat	4.5 g	6%
of which Saturates	3.7 g	19%
Carbohydrate	4.5 g	2%
of which Sugars	1.3 g	1%
Fibre	1.6 g	
Protein	1.9 g	4%
Salt	0.7 g	12%

Source of Nutritional Information Calculation from known/accepted datasets

SUPPLEMENTARY
NUTRITIONAL
INFORMATION

Fibre Type Fibre AOAC

HFSS (HIGH IN
FAT, SALT AND
SUGAR)

HFSS Status Yes

HFSS Score 4

HANDLING &
STORAGE
INFORMATION

Directions For Use

Thoroughly defrost in a refrigerator before use. Open and stir well. Serve hot. Hob: Remove contents from packaging. Place into a saucepan. Heat until piping hot. Stir occasionally; do not boil. Microwave: (800W) 2 ½ mins; (900W) 2 mins. (Based on portion size of 400g). Remove contents from packaging. Place into a non metallic container. Cover. Heat on full power. Timings may vary according to oven power and portion size. Heat until piping hot.

Storage Instructions

Keep frozen at minus 18C or colder. Once thawed, keep chilled (0C to +5C) and use within 14 days. Once opened, keep chilled (0C to +5C) use within 3 days and by date shown on label.

Storage Instructions After Opening

Keep chilled (0C to +5C)

Shelf Life from Time of Production 365 Days

Shelf Life Once Defrosted 14 Days

ACCREDITATIONS/
CERTIFICATIONS/
ASSURANCE
SCHEMES

SALSA (Safe & Local Supplier Approval)

ORIGIN	Product Country of Origin/Place of Provenance		United Kingdom			
PRODUCT CHARACTERISTICS	Standards Testing					
	Do you undertake trend analysis of microbiological results?	Yes	Is shelf life testing undertaken? Commercially Sterile		Yes No	
	Microbiological Standards					
	Organism	Description	Frequency	Target	Maximum	Sample (g or ml)
	Total Viable Count (TVC) (cfu/g or ml)		Annually	<10000	10000000	1
	Enterobacteriaceae (cfu/g or ml)		Annually	<100	10000	1
	E. Coli (cfu/g or ml)		Annually	<20	100	1
	Staphylococcus Aureus (cfu/g or ml)		Annually	<20	10000	1
	Salmonella (cfu/g or ml)		Annually	<0	10	25
	Bacillus Cereus (cfu/g or ml)		Annually	<1000	100000	1
Listeria Monocytogenes (cfu/g or ml)		Annually	<0	10	1	
Clostridium Perfringens (cfu/g or ml)		Annually	<10	10000	1	
Physical Standards						
Test	Description	Frequency	Target	Range	Sample (g or ml)	
Weight (g)		Every Batch	>2400	2400 to 2640	2400	
CONFIGURATION	Case Configuration		Inner Pack Configuration			
	Total Quantity of Inner Components in Outer Case	5 Units				
	Total Quantity of Inner Packs in Outer Case	5 Units				
	Is the Outer Case Splittable?	Yes				
PRODUCT WEIGHTS	Inner Component		Inner Pack			
	Variable Weight Consumer Item	No	Inner Pack Gross Weight		2415 g	
	Inner Component Weight	2400 g	Inner Pack Net Weight		2400 g	
	Net Drained Weight	0 g				
	e mark	No				
	Outer Case					
	Outer Case Gross Weight	12.34 kg				
	Outer Case Net Weight	12 kg				
PRODUCT DIMENSIONS	Inner Component		Inner Pack			
	Inner Component Depth	210 mm	Inner Pack Depth		210 mm	
	Inner Component Width	310 mm	Inner Pack Width		310 mm	
	Inner Component Height	50 mm	Inner Pack Height		50 mm	
	Outer Case					
	Outer Case Depth	240 mm				
	Outer Case Width	320 mm				
	Outer Case Height	310 mm				